



The Addison



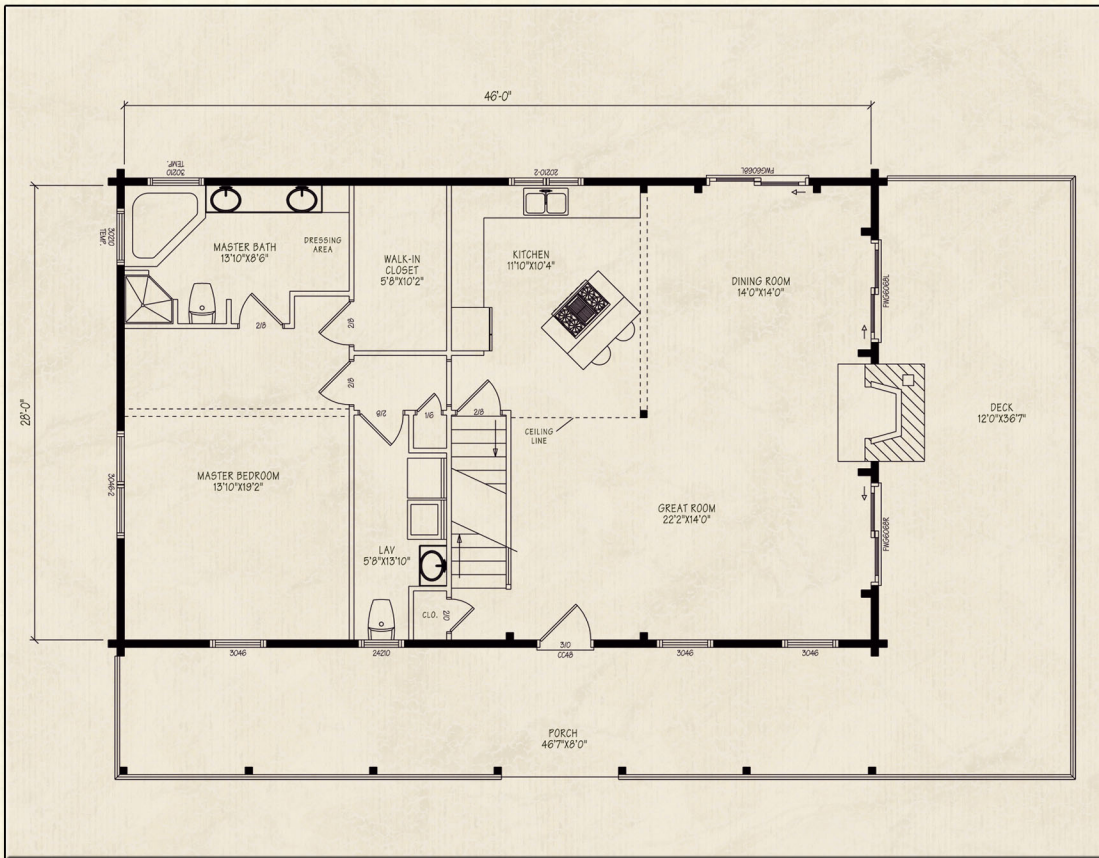
Northeastern Log Homes

info@northeasternlog.com 800-624-2797 www.northeasternlog.com

*Artist's rendering, photography and optional design ideas may vary from the standard model. Please always consult the standard floorplan and refer to the Premier Home Series material list as to what is included.



The Addison



Premier Home Series

28' x 46' Size

2,135 Square Feet

Three Bedrooms

Two and a Half Baths

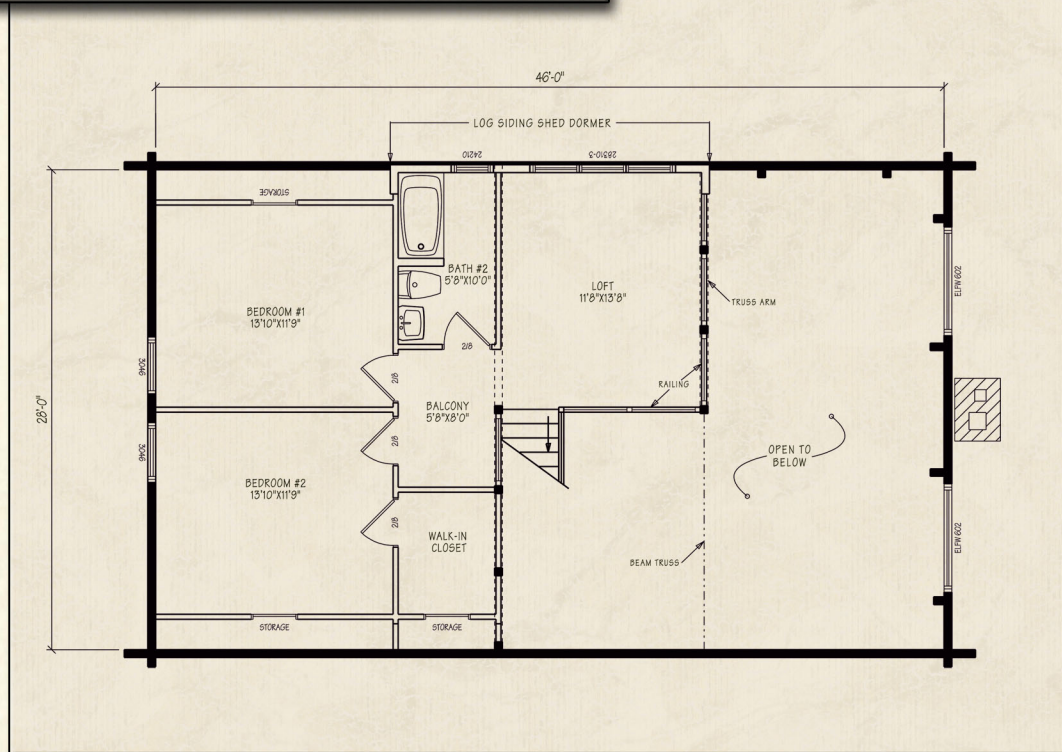
Material Package Price
available for download on
the website

Optional Design Ideas:

Build in pull out drawers in the small storage areas of the second floor bedrooms. It becomes an instant piece of furniture

Change the angled layout of the kitchen counter area to become a "U" shaped kitchen design...now this can give terrific space to generate an eat-in breakfast bar

The walk-in closet on the first floor can become a fantastic pantry area for the kitchen. The Master Bedroom can be revamped to look more like the M. Bedroom in the Westfield or Aspen plans...



Northeastern Log Homes

info@northeasternlog.com 800-624-2797 www.northeasternlog.com

The Addison

